

VERTICAL FAN COILS UTILITY/ CLOSET



CAPITAL
COIL & AIR

THE LEADER IN THE INDUSTRY FOR ALL YOUR HVAC NEEDS.

Replacement Coils | Heat Exchangers | Fan Coils

Phone: 484-498-8660 | Fax: 484-631-0558 | www.capitalcoil.com | sales@capitalcoil.com

VERTICAL

1 THRU 5 1/2 TONS

Performance Data

| ARI APPROVED STANDARD RATINGS | | | | | COOLING CAPACITY | | POWER INPUT (WATTS) |
|-------------------------------|-------------|-----------|------|----------------------------|-------------------------|----------------------------|------------------------|
| SIZE | STYLE | RATED CFM | GPM | WPD (FT./H ₂ O) | TOTAL COOLING (BTUH) | SENSIBLE COOLING (BTUH) | |
| 04 | STANDARD | 530 | 3.2 | 2.1 | 15,930 | 11,690 | 175 |
| | LOW PROFILE | 550 | 2.9 | 4.3 | 14,260 | 11,040 | 228 |
| 06 | STANDARD | 600 | 3.5 | 2.4 | 17,540 | 13,130 | 181 |
| | LOW PROFILE | 750 | 3.5 | 6.4 | 17,460 | 14,410 | 260 |
| 08 | STANDARD | 760 | 4.2 | 3.1 | 20,820 | 17,190 | 316 |
| | LOW PROFILE | 960 | 4.8 | 3.5 | 24,080 | 19,570 | 360 |
| 10 | STANDARD | 900 | 4.9 | 4.6 | 24,650 | 20,290 | 356 |
| | LOW PROFILE | 1,060 | 5.7 | 5.3 | 28,480 | 23,560 | 383 |
| 12 | STANDARD | 970 | 5.2 | 5.0 | 25,990 | 21,580 | 413 |
| | LOW PROFILE | 1,310 | 7.8 | 8.8 | 39,100 | 30,780 | 540 |
| 15 | STANDARD | 1,616 | 10.0 | 5.1 | 49,865 | 40,095 | 529 |
| | LOW PROFILE | 1,550 | 9.7 | 7.9 | 48,624 | 37,500 | 553 |
| 18 | STANDARD | 1,898 | 12.4 | 7.0 | 62,141 | 48,454 | 736 |
| | LOW PROFILE | 1,898 | 13.0 | 10.9 | 65,009 | 49,559 | 736 |
| 22 | STANDARD | 2,075 | 14.4 | 8.8 | 71,879 | 54,529 | 1035 |
| | LOW PROFILE | 2,075 | 14.4 | 8.8 | 71,879 | 54,529 | 1035 |

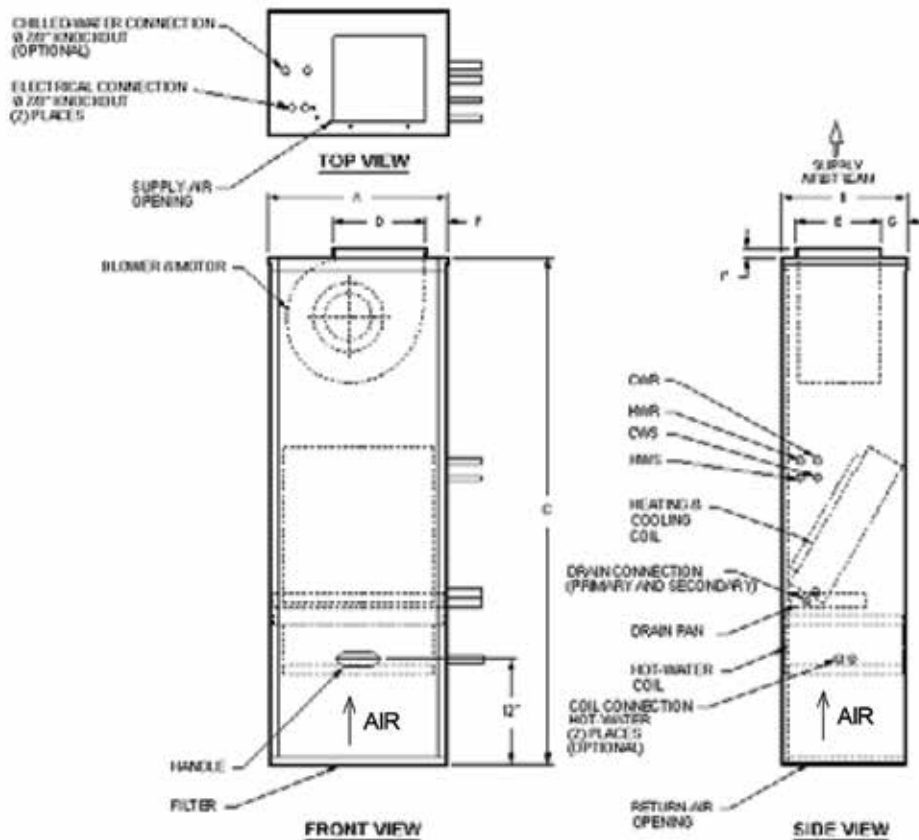
NOTES

1. Based on 80°F and 67°F WB EAT, 45°F EWT, 10°F temperature rise, high fan speed. Motor voltage 115/1/60 power source. Air flow under dry coil conditions. Water pressure drops shown in feet of water. All units are listed under UL Category Control NL. LZFE.
2. Rating are based on actual CFM. Standard coils for 04 is 3 rows and 06-22 is 4 rows.

VERTICAL 1 THRU 2 TONS

Dimensional Drawings

STANDARD CASED VERTICAL - BOTTOM RETURN - 400-800 CFM VCB or VCD



| STANDARD MODEL | A | B | C | D | E | F | G | FILTER SIZE |
|----------------|---------|---------|--------|----------|---------|-------|--------|-------------|
| 04 | 20 5/32 | 14 5/32 | 57 5/8 | 10 15/32 | 7 3/32 | 2 7/8 | 3 1/32 | 16x16x1 |
| 06 | 20 5/32 | 14 5/32 | 57 5/8 | 10 15/32 | 8 15/32 | 2 7/8 | 3 1/32 | 16x20x1 |
| 08 | 20 5/32 | 14 5/32 | 57 5/8 | 10 15/32 | 9 13/32 | 2 7/8 | 3 1/32 | 20x20x1 |

STANDARD MODELS 04 THRU 08

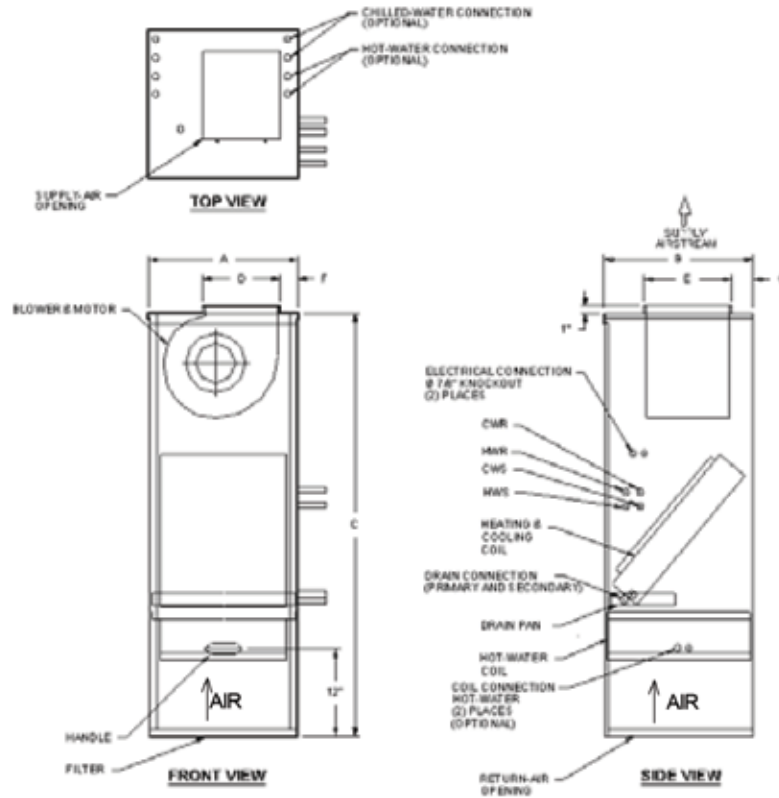
- All sizes shown in inches
- Right-hand unit shown, left-hand unit opposite.
- Coil connections determined by facing the supply-air opening.
- Electrical junction box is located on the same side as the coil connections.
- Unit must be installed level and condensate drain lines should be trapped.
- Drain pan is powder-coated epoxy with a 1/8" thick closed-cell insulation and has 3/4" NPT primary and secondary drain connections.
- Entire cabinet, scroll and blower wheel are heavy-gauge, galvanized steel.
- Coil connections: 1/2" CW and HW on sizes 04-08.

VERTICAL

2 1/2 THRU 5 1/2 TONS

Dimensional Drawings

STANDARD CASED VERTICAL - BOTTOM RETURN - 1000-2200 CFM VCB or VCD



| STANDARD MODEL | A | B | C | D | E | F | G | FILTER SIZE |
|----------------|----------|---------|--------|--------|----------|-------|--------|-------------|
| 10 | 20 11/32 | 20 5/16 | 57 5/8 | 10 3/8 | 11 15/16 | 2 1/8 | 3 1/16 | 20x20x1 |
| 12 | 20 11/32 | 20 5/16 | 57 5/8 | 10 3/8 | 11 15/16 | 2 1/8 | 3 1/16 | 20x20x1 |
| 15 | 36 | 24 5/8 | 62 3/4 | 24 | 10 1/2 | 3 | 3 | 30x24x1 |
| 18 | 36 | 24 5/8 | 62 3/4 | 24 | 10 1/2 | 3 | 3 | 30x24x1 |
| 22 | 36 | 24 5/8 | 62 3/4 | 24 | 10 1/2 | 3 | 3 | 30x24x1 |

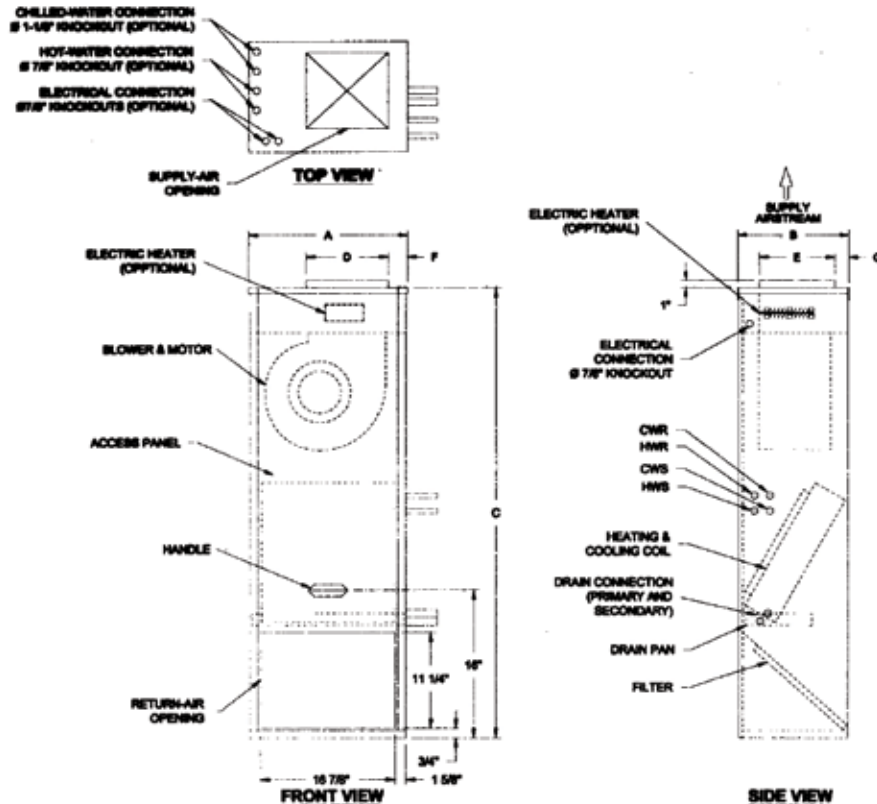
STANDARD MODELS 10 THRU 22.

- All sizes shown in inches
- Right-hand unit shown, left-hand unit opposite.
- Coil connections determined by facing the supply-air opening.
- Electrical junction box is located on the same side as the coil connections.
- Unit must be installed level and condensate drain lines should be trapped.
- Drain pan is powder-coated epoxy with a 1/8" thick closed-cell insulation and has 3/4" NPT primary and secondary drain connections.
- Entire cabinet, scroll and blower wheel are heavy-gauge, galvanized steel.
- Coil connections: 1/2" CW on size 10; 3/4" on sizes 12-22 and 1/2" HW on sizes 10-22.

VERTICAL 1 THRU 2 TONS

Dimensional Drawings

STANDARD CASED VERTICAL - FRONT RETURN - 400-800 CFM VCR



| MODEL | A | B | C | D | E | F | G | FILTER SIZE |
|-------|---------|---------|--------|----------|---------|--------|--------|-------------|
| 04 | 20 5/32 | 14 5/32 | 57 5/8 | 10 15/32 | 7 3/32 | 2 7/32 | 3 1/32 | 16x16x1 |
| 06 | 20 5/32 | 14 5/32 | 57 5/8 | 10 15/32 | 8 15/32 | 2 7/32 | 3 1/32 | 16x20x1 |
| 08 | 20 5/32 | 14 5/32 | 57 5/8 | 10 15/32 | 9 13/32 | 2 7/32 | 3 1/32 | 20x20x1 |

STANDARD CASED MODELS 04 THRU 08.

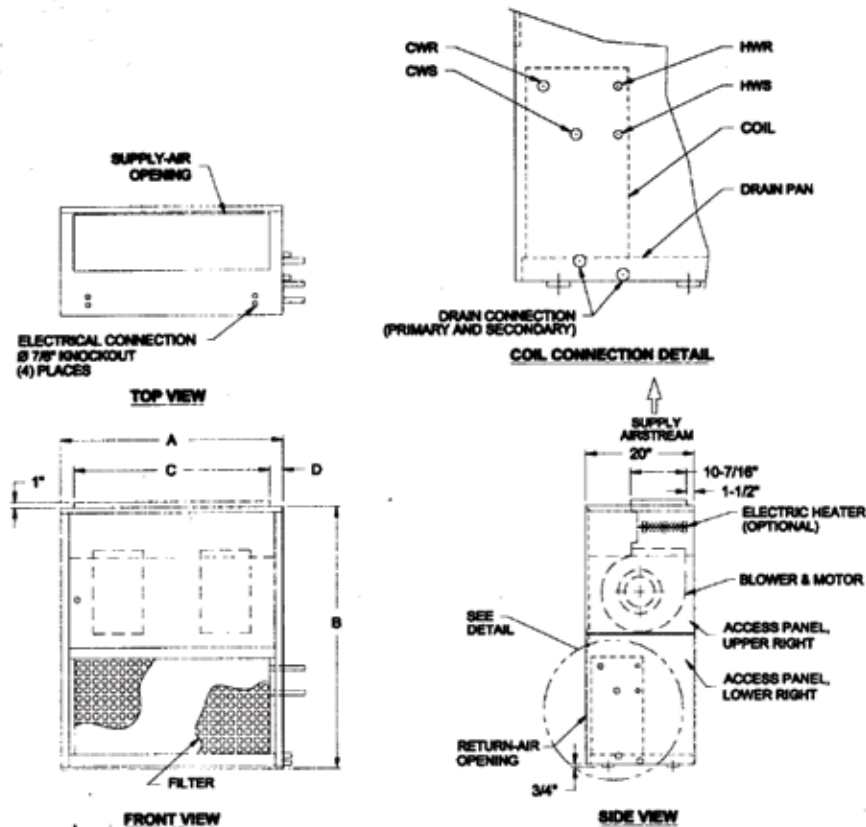
- All sizes shown in inches
- Right-hand unit shown, left-hand unit opposite.
- Coil connections determined by facing the supply-air opening.
- Electrical junction box is located on the same side as the coil connections.
- Unit must be installed level and condensate drain lines should be trapped.
- Drain pan is powder-coated epoxy with a 1/8" thick closed-cell insulation and has 3/4" NPT primary and secondary drain connections.
- Entire cabinet, scroll and blower wheel are heavy-gauge, galvanized steel.
- Coil connections: 1/2" CW and HW on sizes 04-08.

VERTICAL

4 THRU 5 1/2 TONS

Dimensional Drawings

CASED VERTICAL - FRONT RETURN/TOP SUPPLY - 1500-2200 CFM - VCR



| MODEL | A | B | C | D | FILTER SIZE |
|-------|----|----|--------|-------|-------------|
| 15 | 37 | 48 | 25 1/4 | 5 7/8 | 25x25x1 |
| 18 | 37 | 48 | 32 1/4 | 2 3/8 | (2)25x16x1 |
| 22 | 41 | 48 | 36 1/4 | 2 3/8 | (2) 25x20x1 |

MODELS WITH FRONT RETURN/TOP SUPPLY 15 THRU 22.

- All sizes shown in inches
- Right-hand unit shown, left-hand unit opposite.
- Coil connections determined by facing the supply-air opening.
- Electrical junction box is located on the same side as the coil connections.
- Unit must be installed level and condensate drain lines should be trapped.
- Drain pan is powder-coated epoxy with a 1/8" thick closed-cell insulation and has 3/4" NPT primary and secondary drain connections.
- Entire cabinet, scroll and blower wheel are heavy-gauge, galvanized steel.
- Coil connections: 3/4" CW on sizes 15-22 chilled water; 3/4" and 1/2" HW on sizes 15-22 hot water.

VERTICAL

1 THRU 5 1/2 TONS

Dimension & Weights

VERTICAL UNITS

| UNIT | MODEL | ROWS | DIMENSIONS/INCHES | | | WEIGHT/LBS. | | DIMENSIONS/MILLIMETERS | | | WEIGHT/kg | |
|--|-------|------|-------------------|-------|-------|-------------|-----|------------------------|-------|-------|-----------|-----|
| | | | HEIGHT | WIDTH | DEPTH | DRY | WET | HEIGHT | WIDTH | DEPTH | DRY | WET |
| STANDARD BOTTOM/ FRONT RETURN | 04 | 3 | 59 | 21 | 15 | 104 | 109 | 1499 | 533 | 381 | 47 | 50 |
| | | 4 | 59 | 21 | 15 | 109 | 116 | 1499 | 533 | 381 | 49 | 53 |
| | 06 | 3 | 59 | 21 | 15 | 110 | 115 | 1499 | 533 | 381 | 50 | 52 |
| | | 4 | 59 | 21 | 15 | 116 | 122 | 1499 | 533 | 381 | 52 | 55 |
| | 08 | 3 | 59 | 21 | 15 | 142 | 147 | 1499 | 533 | 381 | 64 | 67 |
| | | 4 | 59 | 21 | 15 | 147 | 154 | 1499 | 533 | 381 | 67 | 70 |
| | 10 | 3 | 59 | 21 | 21 | 151 | 156 | 1499 | 533 | 533 | 58 | 71 |
| | | 4 | 59 | 21 | 21 | 156 | 167 | 1499 | 533 | 533 | 71 | 74 |
| | 12 | 3 | 59 | 21 | 21 | 167 | 172 | 1499 | 533 | 533 | 76 | 78 |
| | | 4 | 59 | 21 | 21 | 172 | 179 | 1499 | 533 | 533 | 78 | 81 |
| | 15 | 3 | 59 | 22 | 30 | 224 | 234 | 1499 | 559 | 762 | 102 | 106 |
| | | 4 | 59 | 22 | 30 | 230 | 243 | 1499 | 559 | 762 | 104 | 110 |
| | 18 | 3 | 59 | 22 | 30 | 234 | 244 | 1499 | 559 | 762 | 106 | 111 |
| | | 4 | 59 | 22 | 30 | 240 | 253 | 1499 | 559 | 762 | 109 | 115 |
| | 22 | 3 | 59 | 22 | 30 | 234 | 244 | 1499 | 559 | 762 | 106 | 111 |
| | | 4 | 59 | 22 | 30 | 240 | 253 | 1499 | 559 | 762 | 109 | 115 |

| UNIT | MODEL | ROWS | DIMENSIONS/INCHES | | | WEIGHT/LBS. | | DIMENSIONS/MILLIMETERS | | | WEIGHT/kg | |
|-----------------|-------|------|-------------------|-------|-------|-------------|-----|------------------------|-------|-------|-----------|-----|
| | | | HEIGHT | WIDTH | DEPTH | DRY | WET | HEIGHT | WIDTH | DEPTH | DRY | WET |
| FRONT RETURN | 04 | 3 | 43 | 21 | 15 | 116 | 121 | 1092 | 533 | 508 | 53 | 55 |
| | | 4 | 43 | 21 | 15 | 121 | 128 | 1092 | 533 | 508 | 55 | 58 |
| | 06 | 3 | 43 | 21 | 15 | 116 | 121 | 1092 | 533 | 508 | 53 | 55 |
| | | 4 | 43 | 21 | 15 | 121 | 128 | 1092 | 533 | 508 | 55 | 58 |
| | 08 | 3 | 43 | 25 | 15 | 131 | 136 | 1092 | 635 | 508 | 59 | 62 |
| | | 4 | 43 | 25 | 15 | 136 | 143 | 1092 | 635 | 508 | 62 | 65 |
| | 10 | 3 | 46 | 25 | 21 | 141 | 146 | 1092 | 635 | 508 | 64 | 66 |
| | | 4 | 46 | 25 | 21 | 146 | 153 | 1168 | 635 | 508 | 66 | 70 |
| | 12 | 3 | 46 | 30 | 21 | 152 | 157 | 1168 | 762 | 508 | 69 | 71 |
| | | 4 | 46 | 30 | 21 | 157 | 164 | 1168 | 762 | 508 | 71 | 75 |
| | 15 | 3 | 49 | 37 | 30 | 202 | 212 | 1245 | 940 | 508 | 92 | 96 |
| | | 4 | 49 | 37 | 30 | 208 | 221 | 1245 | 940 | 508 | 94 | 100 |
| | 18 | 3 | 49 | 37 | 30 | 213 | 223 | 1245 | 940 | 508 | 97 | 101 |
| | | 4 | 49 | 37 | 30 | 219 | 232 | 1245 | 940 | 508 | 99 | 105 |
| | 22 | 3 | 49 | 41 | 30 | 230 | 240 | 1245 | 1041 | 508 | 104 | 109 |
| | | 4 | 49 | 41 | 30 | 236 | 249 | 1245 | 1041 | 508 | 107 | 113 |