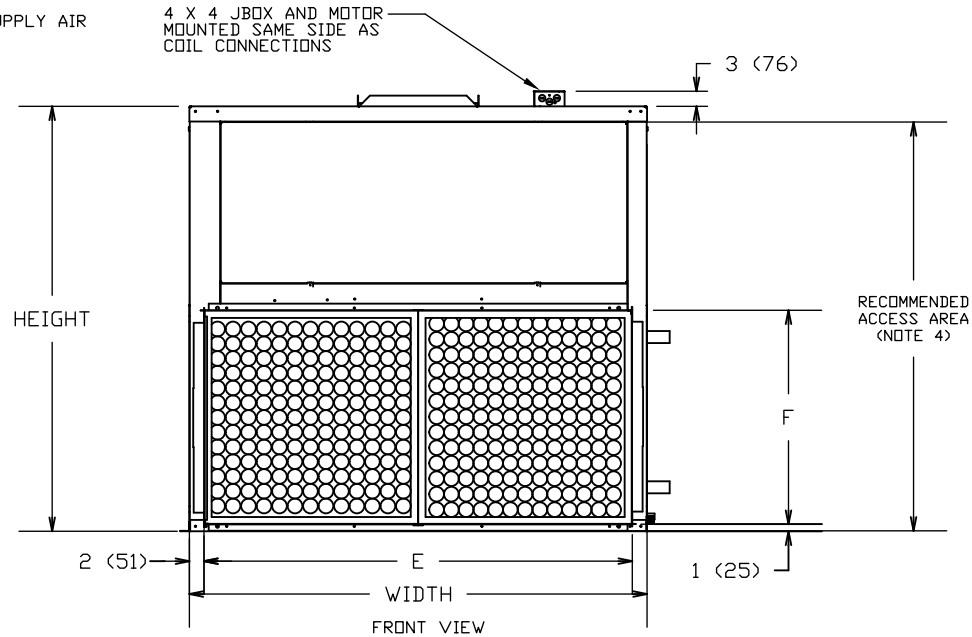
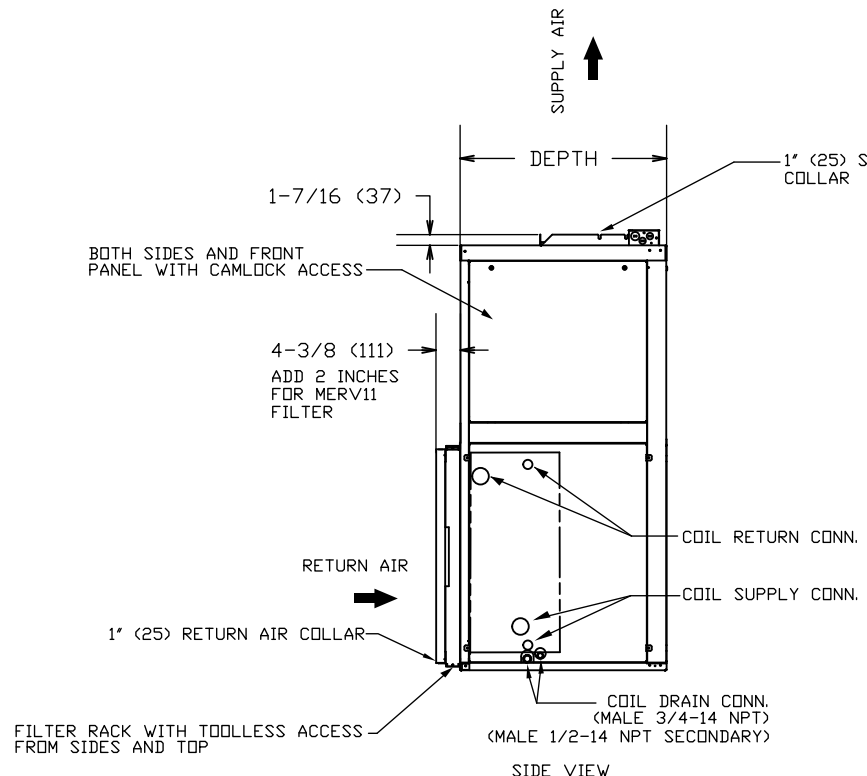
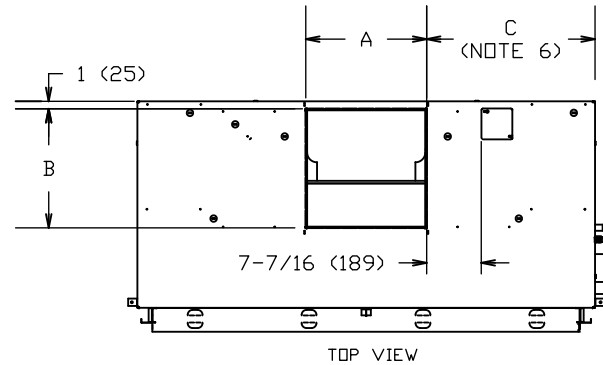


REVISION HISTORY		
REV	DATE	ECN
-	08/25/10	10-1273
A	09/09/11	11-2141
B	04/22/19	19-0422




- NOTES:
1. RIGHT HAND SHOWN, LEFT HAND OPPOSITE.
 2. ALL DIMENSIONS +/- 1/4 INCH (+/- 6 MM)
 3. DRAIN PAN REMOVAL IS ON THE PIPING SIDE OF THE UNIT
 4. ALLOW ADEQUATE SPACING OR MANUEVERABILITY OF UNIT TO ALLOW SERVICE THROUGH RECOMMENDED ACCESS AREA
 5. DIMENSIONS IN PARENTHESIS ARE IN MILLIMETERS.
 6. "C" DIMENSION IS MEASURED FROM COIL SIDE OF UNIT.
 7. PRODUCT SPECIFICATIONS ARE SUBJECT TO CHANGE WITHOUT NOTICE.

SIZE	FAN SIZE	DEPTH	WIDTH	HEIGHT	SUPPLY DUCT			RETURN DUCT	
					A	B	C	E	F
VWG 06	9X4	20 (508)	28 (711)	36-1/2 (927)	7-1/8(181)	10-1/2(267)	16-3/4 (425)	24 (610)	16-1/2(419)
VWG 08	9X6	20 (508)	28 (711)	36-1/2 (927)	8-1/2(216)	10-1/2(267)	15-1/4 (387)	24 (610)	16-1/2(419)
VWG 10	10X4	22 (559)	37 (940)	39-3/8 (1000)	7-1/8(181)	11-9/16(294)	24-1/2 (622)	33 (838)	18-1/4(464)
VWG 12	10X7	22 (559)	37 (940)	39-3/8 (1000)	9-15/16(252)	11-9/16(294)	21-1/2 (546)	33 (838)	18-1/4(464)
VWG 16	11X10	22 (559)	47 (1194)	39-3/8 (1000)	13-3/8(340)	12-3/4(324)	16-3/4(425)	43 (1092)	18-1/4(464)
VWG 20	12X9	24 (610)	48 (1219)	45-1/8 (1146)	12-1/2(216)	13-3/4(349)	17-3/4(451)	44 (1118)	20-3/4(527)
VWG 30	12X12	28 (711)	48 (1219)	54-3/16 (1376)	15-7/8(403)	13-3/4(349)	16 (406)	44 (1118)	29 (737)
VWG 40	15X12	28 (711)	62 (1575)	57-5/8 (1464)	16-7/16(418)	16-1/16(408)	22-3/4(578)	58 (1473)	29 (737)

TITLE
VERTICAL BELT DRIVE

VWG

JOB NUMBER	
JOB NAME	
DRAWN BY	
REVISION	SHEET 1 OF 1