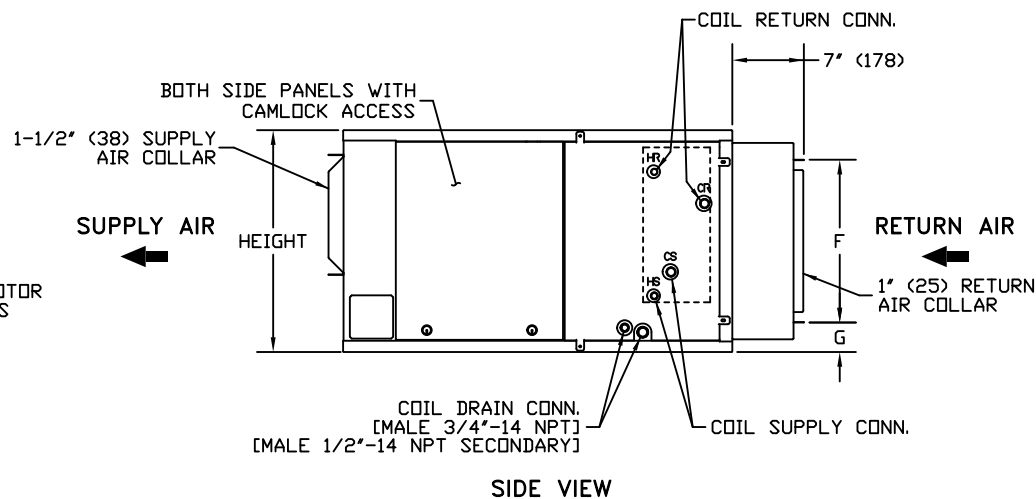
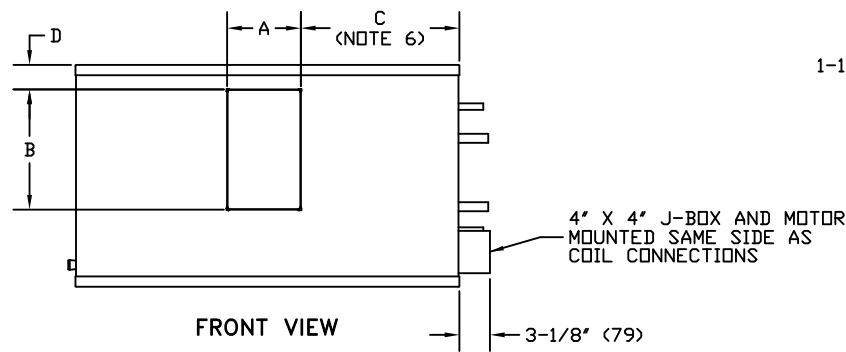
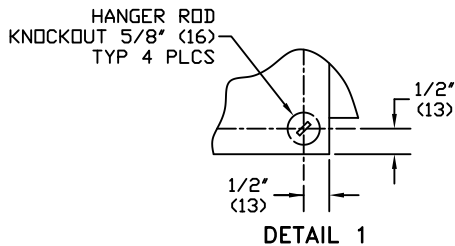
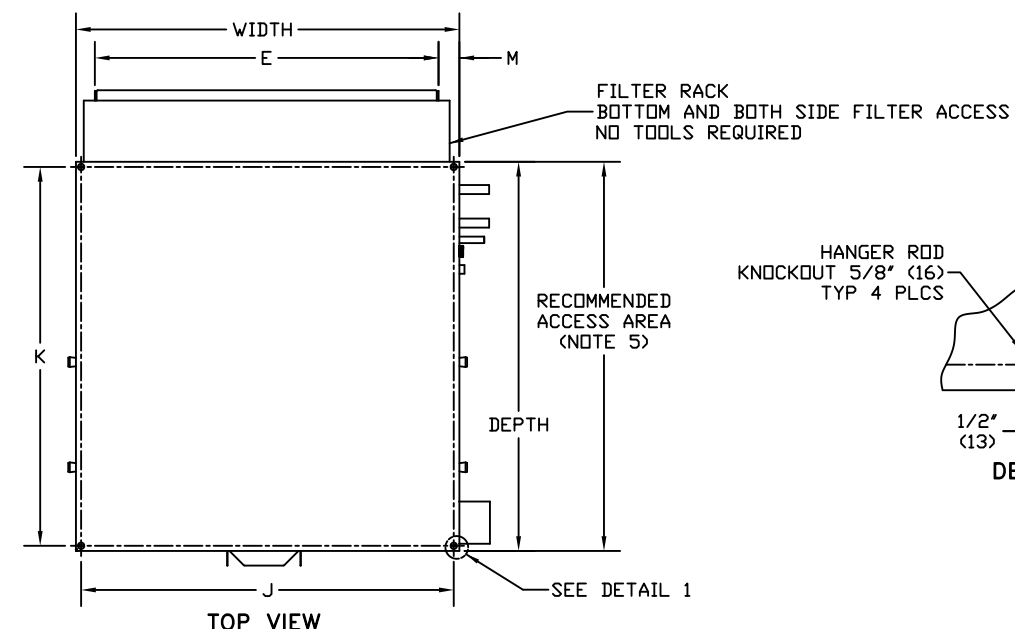


REVISION HISTORY		
REV	DATE	ECN
		10-1273
		17-0582
		19-1132



- NOTES:
1. RIGHT-HAND SHOWN. LEFT HAND OPPOSITE.
 2. ALL DIMENSIONS ±1/4 INCH (6 MM).
 3. PRODUCT SPECIFICATIONS ARE SUBJECT TO CHANGES WITHOUT NOTICE.
 4. DIMENSIONS IN PARENTHESIS ARE IN MILLIMETERS.
 5. ALLOW ADEQUATE SPACING FOR MANUEVERABILITY AROUND UNIT TO ALLOW SERVICE THROUGH RECOMMENDED ACCESS AREA.
 6. "C" DIMENSION IS MEASURED FROM COIL SIDE OF UNIT.
 7. MIXING BOX OPTION WILL VARY RETURN DUCT DIMENSIONS, REFER TO MIXING BOX SUBMITTAL.

SIZE	FAN SIZE	DEPTH	WIDTH	HEIGHT	SUPPLY DUCT				RETURN DUCT			MOUNTING HOLES		M
					A	B	C	D	E	F	G	J	K	
HWG06	9X4	36(914)	28(711)	19-3/4(502)	7-1/8(181)	10-1/2(267)	14-1/2(368)	2-1/4(57)	24-1/4(616)	14(356)	2-3/4(70)	27-1/4(686)	35-1/4(895)	2(51)
HWG08	9X6	36(914)	28(711)	19-3/4(502)	8-1/2(216)	10-1/2(267)	14(356)	2-1/4(57)	24-1/4(616)	14(356)	2-3/4(70)	27-1/4(686)	35-1/4(895)	2(51)
HWG10	10X4	37-1/2(953)	37(940)	21-1/2(546)	7-1/8(181)	11-5/8(295)	15-1/4(387)	2-1/4(57)	33-1/4(845)	15-3/4(401)	2-7/8(73)	36-1/4(921)	37(940)	2(51)
HWG12	10X7	37-1/2(953)	37(940)	21-1/2(546)	10(254)	11-5/8(295)	14(356)	2-1/4(57)	33-1/4(845)	15-3/4(401)	2-7/8(73)	36-1/4(921)	37(940)	2(51)
HWG16	11X10	37-3/4(959)	47(1194)	21-1/2(546)	13-3/8(340)	12-3/4(324)	16-3/4(425)	2-1/4(57)	43-7/8(1115)	15-3/4(401)	2-7/8(73)	46-1/4(1175)	37(940)	1-1/2(38)
HWG20	12X9	40-1/4(1022)	48(1219)	24(610)	12-1/2(216)	13-3/4(349)	17-3/4(451)	2-1/4(57)	44-1/4(1124)	18(457)	2-7/8(73)	47-1/4(1200)	39-1/2(1033)	2(51)
HWG30	12X12	40-1/4(1022)	48(1219)	32-1/4(819)	15-7/8(403)	13-3/4(349)	16(406)	7-1/4(184)	44-1/4(1124)	26-1/2(673)	1-1/4(32)	47-1/4(1200)	39-1/2(1033)	2(51)
HWG40	15X12	43-1/2(1105)	62(1575)	32-1/4(819)	16-3/8(416)	16-1/8(410)	22-3/4(578)	6-1/4(159)	58-1/4(1480)	26-1/2(673)	1-1/4(32)	61-1/4(1556)	42-1/2(1080)	2(51)

TITLE
HORIZONTAL BELT DRIVE

MODEL
HWG

JOB NUMBER

JOB NAME

DRAWN BY

JPAW NG NUM3CP

REVISION

SHEET
1 OF 1