

# BELT DRIVE AIR HANDLING UNITS



**CAPITAL**  
COIL & AIR

THE LEADER IN THE INDUSTRY FOR ALL YOUR HVAC NEEDS.

Replacement Coils | Heat Exchangers | Fan Coils

Phone: 484-498-8660 | Fax: 484-631-0558 | [www.capitalcoil.com](http://www.capitalcoil.com) | [sales@capitalcoil.com](mailto:sales@capitalcoil.com)

# COOLING CAPACITIES

Cooling Capacities - All Horizontal & Vertical Units - EWT: 45°F & 50°F

COOLING CAPACITIES FOR WATER TEMPERATURE RISE 10° - 80°F DB/67°F WB																	
SIZE	ROWS	CIR.	CFM	ENTERING WATER TEMPERATURE 45°						ENTERING WATER TEMPERATURE 50°							
				TOTAL BTU	SENS BTU	GPM	WPD	APD	GPM/CIR.	TUBE VEL.	TOTAL BTU	SENS BTU	GPM	WPD	APD	GPM/CIR.	TUBE VEL.
02	4	3	800	28.7	21.3	6.0	5.8	0.590	2.0	3.4	20.8	18.3	4.4	3.6	0.533	1.5	2.5
	6	7	800	31.5	22.8	6.6	1.3	0.872	0.9	1.6	22.8	19.6	4.8	1.1	0.795	0.7	1.2
	8	7	800	38.3	25.9	8.1	2.3	1.199	1.2	2.0	27.9	21.7	5.9	1.3	1.114	0.8	1.4
03	4	7	1200	36.8	29.3	7.7	1.5	0.609	1.1	1.9	25.7	25.7	5.5	0.8	0.467	0.8	1.3
	6	7	1200	51.2	35.8	10.8	3.6	0.962	1.5	2.6	37.1	30.6	7.8	1.9	0.882	1.1	1.9
	8	7	1200	60.5	40.3	12.7	5.3	1.312	1.8	3.1	44.7	33.9	9.5	3.5	1.228	1.4	2.3
04	4	7	1600	55.5	41.6	11.7	3.0	0.584	1.7	2.8	40.2	35.6	8.5	2.0	0.526	1.2	2.1
	6	7	1600	74.0	50.2	15.7	7.0	0.910	2.2	3.8	53.9	42.6	11.4	3.9	0.841	1.6	2.8
	8	7	1600	85.3	55.8	18.0	11.7	1.232	2.6	4.4	63.3	46.5	13.3	6.7	1.159	1.9	3.2
05	4	8	2000	67.2	50.7	14.2	3.5	0.668	1.8	3.0	44.9	44.9	9.5	2.1	0.497	1.2	2.0
	6	16	2000	76.7	56.4	16.1	1.6	0.998	1.0	1.7	55.7	48.9	11.8	0.9	0.909	0.7	1.2
	8	16	2000	93.9	64.0	19.9	2.8	1.374	1.2	2.1	68.4	54.3	14.4	1.5	1.275	0.9	1.5
07.5	4	10	3000	109.1	79.9	22.9	5.9	0.612	2.3	3.9	79.3	68.5	16.8	3.8	0.554	1.7	2.8
	6	15	3000	133.7	92.2	28.0	4.7	0.931	1.9	3.2	97.7	78.2	20.7	3.4	0.859	1.4	2.3
	8	15	3000	156.5	102.7	33.2	6.5	1.266	2.2	3.8	115.6	86.4	24.5	4.3	1.188	1.6	2.8
10	4	20	4000	130.4	100.2	27.7	2.5	0.613	1.4	2.3	88.7	88.7	19.1	1.8	0.462	1.0	1.6
	6	30	4000	161.5	116.6	34.2	1.5	0.938	1.1	1.9	116.5	100.0	24.6	1.4	0.855	0.8	1.4
	8	30	4000	194.1	130.6	40.9	2.4	1.284	1.4	2.3	141.7	109.8	29.8	2.2	1.196	1.0	1.7
12.5	4	20	5000	173.2	129.9	36.5	3.1	0.620	1.8	3.1	114.7	114.7	24.4	2.1	0.458	1.2	2.1
	6	30	5000	213.2	149.0	44.9	2.7	0.945	1.5	2.5	154.5	127.7	32.4	1.5	0.867	1.1	1.8
	8	30	5000	251.9	168.0	52.8	4.2	1.287	1.8	3.0	184.9	141.3	38.7	2.3	1.204	1.3	2.2
15	4	20	6000	216.5	159.7	45.5	5.1	0.625	2.3	3.9	157.5	136.9	33.4	2.9	0.565	1.7	2.8
	6	30	6000	265.7	182.6	55.7	3.5	0.949	1.9	3.1	194.2	156.5	41.2	2.5	0.877	1.4	2.3
	8	30	6000	309.8	203.5	64.8	5.5	1.290	2.2	3.7	230.0	171.1	48.7	3.9	1.212	1.6	2.8
20	4	26	8000	291.0	213.0	61.1	5.2	0.624	2.4	4.0	211.3	182.6	44.8	3.5	0.564	1.7	2.9
	6	39	8000	356.1	245.9	74.7	4.2	0.947	1.9	3.2	260.8	208.6	55.3	2.4	0.875	1.4	2.4
	8	52	8000	398.8	266.2	83.8	3.7	1.274	1.6	2.7	292.5	221.7	61.3	2.0	1.190	1.2	2.0
25	4	26	10000	382.7	272.6	81.3	10.2	0.625	3.1	5.3	276.5	233.6	58.4	5.5	0.566	2.2	3.8
	6	52	10000	441.9	304.3	92.6	3.3	0.933	1.8	3.0	322.8	260.8	68.5	2.4	0.861	1.3	2.2
	8	52	10000	518.7	342.3	110.3	5.6	1.271	2.1	3.6	382.5	285.2	81.0	3.8	1.190	1.6	2.6
30	4	52	12000	391.3	300.5	83.0	2.9	0.677	1.6	2.7	265.9	265.9	57.3	1.4	0.508	1.1	1.9
	6	52	12000	528.7	365.1	110.8	4.9	1.058	2.1	3.6	387.4	313.0	82.1	3.5	0.976	1.6	2.7
	8	52	12000	617.1	407.0	129.1	7.9	1.436	2.5	4.2	459.1	342.3	97.0	4.6	1.348	1.9	3.2

## SYMBOLS

GPM: Gallons of water per minute

APD: Air Pressure Drop

WPD: Water Pressure drop in feet of water

# HEATING CAPACITIES

## Heating Capacities For Horizontal & Vertical Units 2 Thru 30 Tons

### HOT WATER

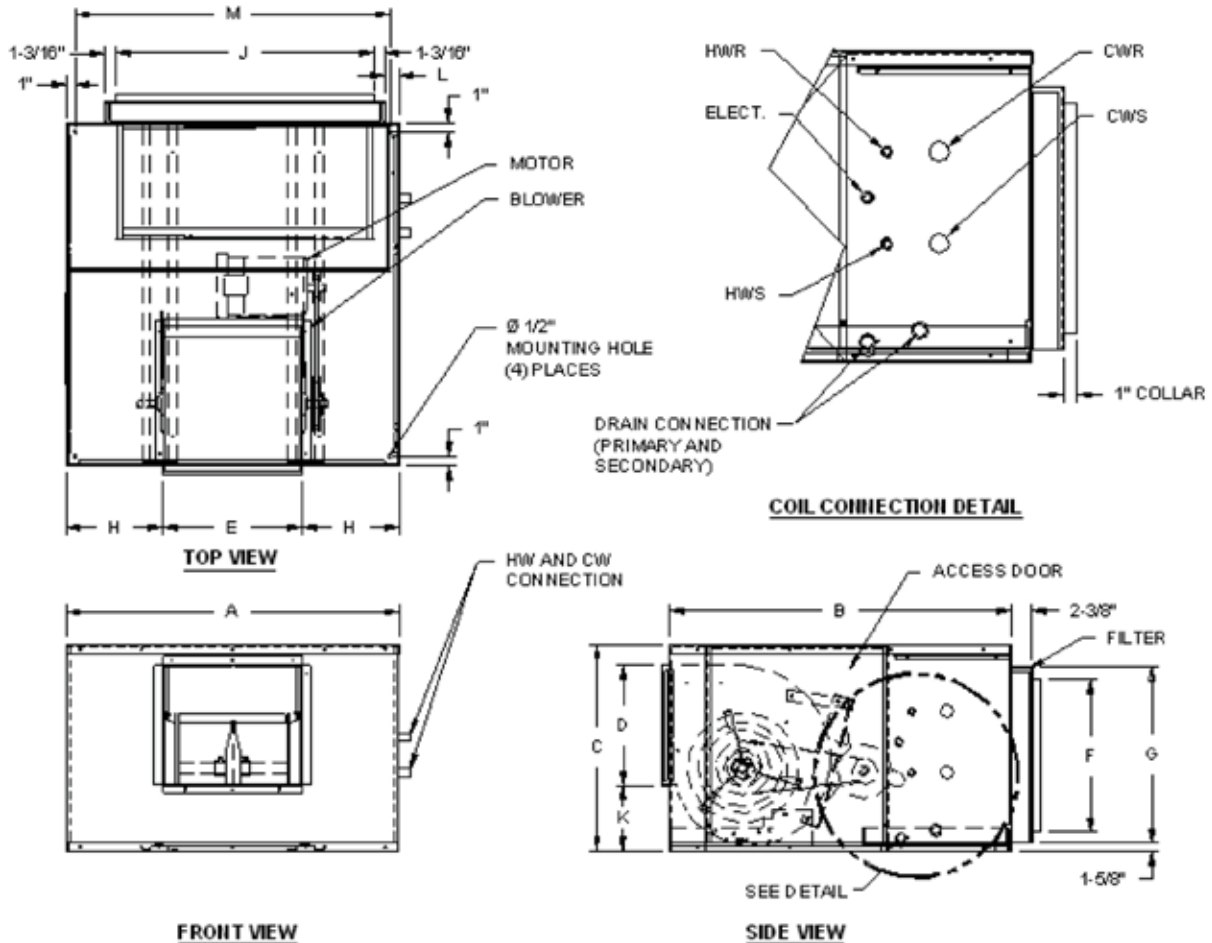
ENTERING CONDITIONS: 70°F DB AIR/180°F EWT									
				TEMPERATURE DROP 20°F					
MODEL BBHW	ROWS	CIR.	CFM	TOTAL BTU	GPM	WPD	APD	GPM/ CIR.	TUBE VEL.
02	1	2	800	31.1	3.3	1.4	0.106	1.6	2.8
	2	3	800	54.2	5.7	2.1	0.212	1.9	3.2
03	1	2	1200	47.6	5.0	3.5	0.114	2.5	4.3
	2	3	1200	82.2	8.7	5.3	0.229	2.9	4.9
04	1	3	1600	64.4	6.8	2.1	0.106	2.3	3.9
	2	3	1600	112.9	11.5	9.6	0.212	3.8	6.5
05	1	4	2000	76.0	8.0	1.8	0.122	2.0	3.4
	2	4	2000	136.6	14.5	8.1	0.244	3.6	6.1
07.5	1	5	3000	120.7	12.8	2.9	0.110	2.6	4.3
	2	10	3000	203.8	21.7	3.2	0.219	2.2	3.7
10	1	10	4000	152.0	16.1	1.4	0.113	1.6	2.7
	2	10	4000	274.8	29.2	4.8	0.226	2.9	4.9
12.5	1	10	5000	195.5	20.6	2.5	0.112	2.1	3.5
	2	10	5000	348.5	37.0	7.1	0.225	3.7	6.3
15	1	10	6000	239.6	25.4	2.9	0.112	2.5	4.3
	2	10	6000	420.2	42.9	10.4	0.224	4.3	7.3
20	1	13	8000	320.6	34.0	2.7	0.111	2.6	4.4
	2	19	8000	553.5	58.8	3.6	0.223	3.1	5.2
25	1	13	10000	409.6	43.4	4.8	0.110	3.3	5.7
	2	19	10000	702.4	74.5	6.3	0.220	3.9	6.6
30	1	13	12000	476.7	100.9	6.7	0.124	7.8	13.1
	2	26	12000	811.3	86.3	5.5	0.249	3.3	5.6

#### SYMBOLS

LDB: Leaving dry bulb temperature in F°  
 WPD: Water Pressure drop in feet of water  
 GPM: Gallons of water per minute

# HORIZONTAL DRAWINGS 2 THRU 5 TONS

Horizontal 800 Thru 2000 CFM (2 thru 5 tons)



DIMENSIONS - HORIZONTAL AIR HANDLER 800 THRU 2000 CFM														
MODEL	A	B	C	D	E	F	G	H	J	K	L	M	N	FILTER SIZE
02	24 1/8	39 1/8	20 1/2	11 11/16	8 9/16	17 1/2	20	7 3/4	18	6 5/8	1	22 1/8	26	(1) 20x20x2
03	30 1/8	39 1/8	20 1/2	11 11/16	13 1/2	17 1/2	20	8 5/16	23	6 5/8	1	28 1/8	32	(1) 20x25x2
04	38 1/16	39 1/8	20 1/2	11 11/16	13 1/2	17 1/2	20	12 1/4	29 5/8	6 5/8	1 3/8	36 1/16	40	(2) 16x20x2
05	38 1/16	39 1/8	23 11/16	13 13/16	15 15/16	17 1/2	20	11 1/16	29 5/8	7 9/16	1 3/8	36 1/16	40	(2) 16x20x2

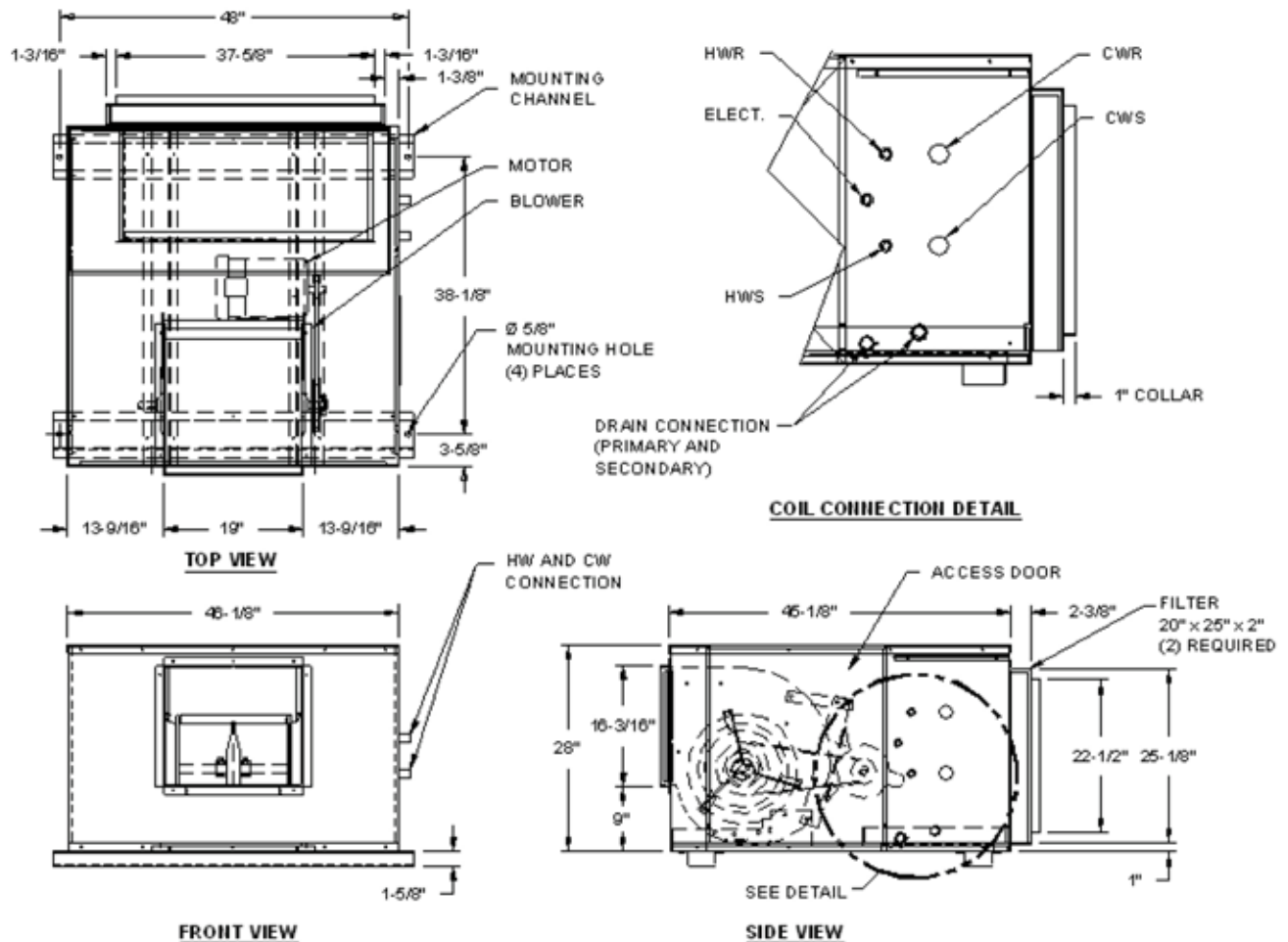
## MODEL HWG / HWP

- Right-hand unit shown, left-hand unit opposite.
- Coil connections determined by facing the supply-air opening.
- Electrical junction box is located on the same side as the coil connections.
- Drain pan is powder-coated epoxy with a 1/4" thick closed-cell insulation and has 3/4" to 1" NPT primary and secondary drain connections.

# HORIZONTAL DRAWINGS

## 7 1/2 TONS

Horizontal 3000 CFM (7.5 tons)

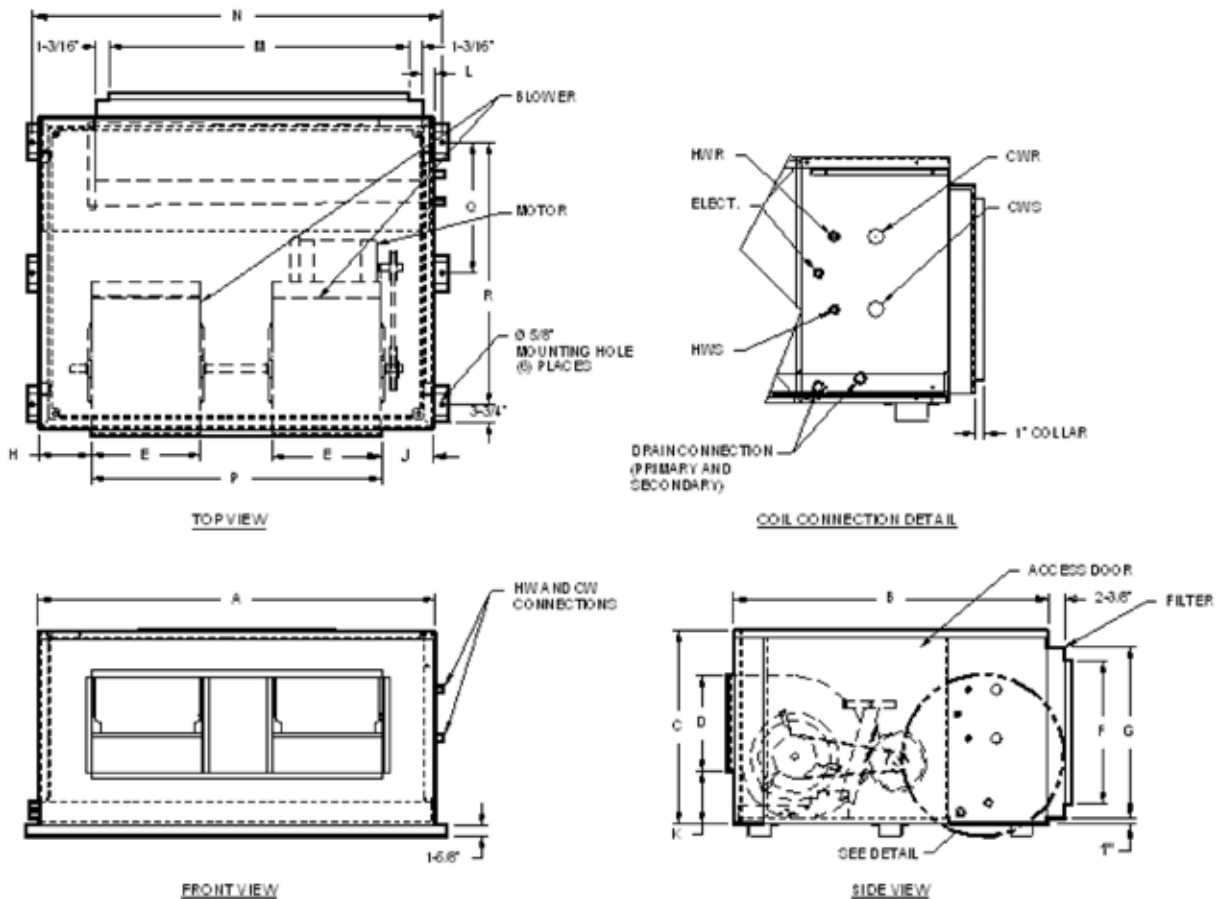


### MODEL HWG / HWP

- Right-hand unit shown, left-hand unit opposite.
- Coil connections determined by facing the supply-air opening.
- Electrical junction box is located on the same side as the coil connections.
- Drain pan is powder-coated epoxy with a 1/4" thick closed-cell insulation and has 3/4" to 1" NPT primary and secondary drain connections.

# HORIZONTAL DRAWINGS 10 THRU 30 TONS

Horizontal 4000 Thru 12,000 CFM (10 thru 30 tons)

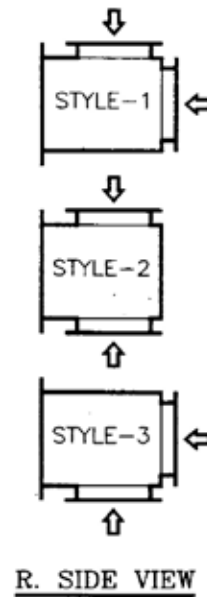
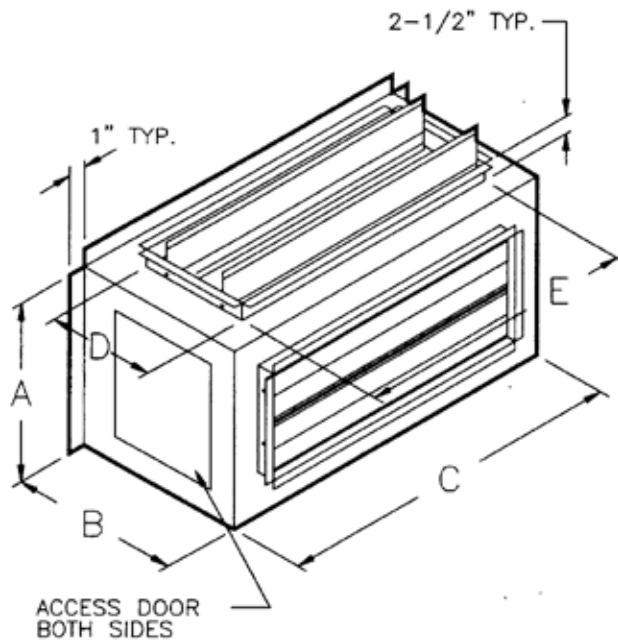


DIMENSIONS - HORIZONTAL AIR HANDLER 4000 THRU 12,000 CFM																	
MODEL	A	B	C	D	E	F	G	H	J	K	L	M	N	P	Q	R	FILTER SIZE
10	57 1/8	45 3/16	27 15/16	13 13/16	15 15/16	22 9/16	25 1/8	6 1/8	6 1/8	7 1/2	1 7/16	48 3/16	59	44 13/16	N/A	37 11/16	(2) 25x25x2
12.5	71 1/8	45 3/16	27 15/16	13 13/16	15 15/16	22 9/16	25 1/8	16 1/8	10 1/8	7 1/2	1 7/16	62 3/16	73	44 13/16	N/A	37 11/16	(4) 16x25x2
15	85 1/8	45 3/16	27 15/16	16 3/16	18 15/16	22 9/16	25 1/8	18 1/8	12 1/8	9	1 3/8	72 11/16	87	54 13/16	18 3/16	37 11/16	(3) 25x25x2
20	85 1/8	45 3/16	35 3/16	16 3/16	18 15/16	29 13/16	32 3/16	18 1/8	12 1/8	9	7/16	76 11/16	87	54 13/16	18 3/16	37 11/16	(8) 16x20x2
25	105 3/8	45 3/16	35 3/16	16 3/16	18 7/8	30 9/16	32 5/16	30 1/4	20 3/8	9	7/16	103 1/16	107	54 3/4	18 7/8	37 11/16	(8) 16x20x2 (2) 16x25x2
30	116 5/16	55 1/4	35 3/16	16 3/16	18 7/8	30 9/16	32 5/16	30 13/16	30 3/4	9	7/16	104 1/2	118 1/2	54 3/4	23 7/8	47 3/4	(8) 16x25x2 (2) 16x25x2

## MODEL HWG / HWP

- Right-hand unit shown, left-hand unit opposite.
- Coil connections determined by facing the supply-air opening.
- Electrical junction box is located on the same side as the coil connections.
- Drain pan is powder-coated epoxy with a 1/4" thick closed-cell insulation and has 3/4" to 1" NPT primary and secondary drain connections.

# MIXING BOXES



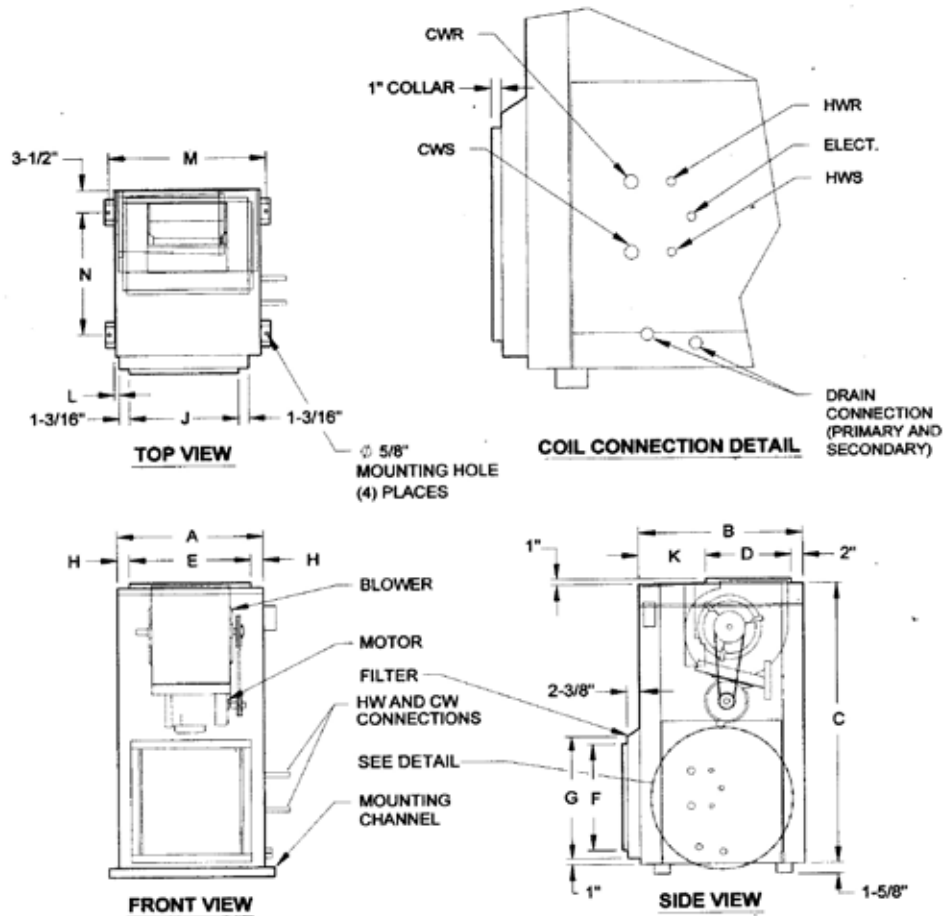
TWO-POSITION ECONOMIZER MODULATING					
MODEL	A	B	C	D	E
02	17 1/2	18	18	12	14
03	17 1/2	18	23	12	18
04	17 1/2	18	29 11/16	12	24
05	17 1/2	18	29 11/16	12	24
07.5	22 9/16	18	37 11/16	14	32
10	22 9/16	22	49 3/16	18	45
12.5	22 9/16	22	62 3/16	18	58
15	22 9/16	22	72 11/16	18	68
20	29 9/16	22	76 11/16	18	72
25	30 9/16	22	103 1/16	18	99
30	30 9/16	22	104 3/4	18	99

- Heavy-gauge galvanized steel organization.
- Internally insulated with one-half inch, over three-pound density fiberglass.
- One-inch duct flange on damper openings.
- Dampers are centered in panel.
- Single, horizontal blade dampers with air seals on edge for positive closing, except double horizontal blade dampers.
- Furnished with crank arms and linkage rod for damper connection.
- Access doors on both sides.
- Connections may be made on either side (Linkage hardware motor and controls not included).
- Box attaches to return-air and outside-air duct flanges.
- Shipped separately for field installation.

# VERTICAL DRAWINGS

## 2 THRU 7 1/2 TONS

Vertical 800 Thru 3000 CFM (2 thru 7.5 tons)



DIMENSIONS - VERTICAL AIR HANDLER 800 THRU 3000 CFM														
MODEL	A	B	C	D	E	F	G	H	J	K	L	M	N	FILTER SIZE
02	24 1/16	27 1/8	46	14	20	17 1/2	20	2 1/32	18	11 1/8	1	26	20 1/8	(1) 20x20x2
03	30 1/16	27 1/8	46	14	20	17 1/2	20	5 1/32	23	11 1/8	1	32	20 1/8	(1) 20x25x2
04	38 1/16	27 1/8	46	16	22	17 1/2	20	8 1/32	29 5/8	9 1/8	1 3/8	40	20 1/8	(2) 16x20x2
05	38 1/16	27 1/8	54	18	24	17 1/2	20	7 1/16	29 5/8	7 1/8	1 3/8	40	20 1/8	(2) 16x20x2
07.5	46 1/8	27 1/8	60	20	30	22 1/2	25 1/8	8 1/8	37 5/8	5 1/4	1 3/8	48	20 1/4	(2) 20x25x2

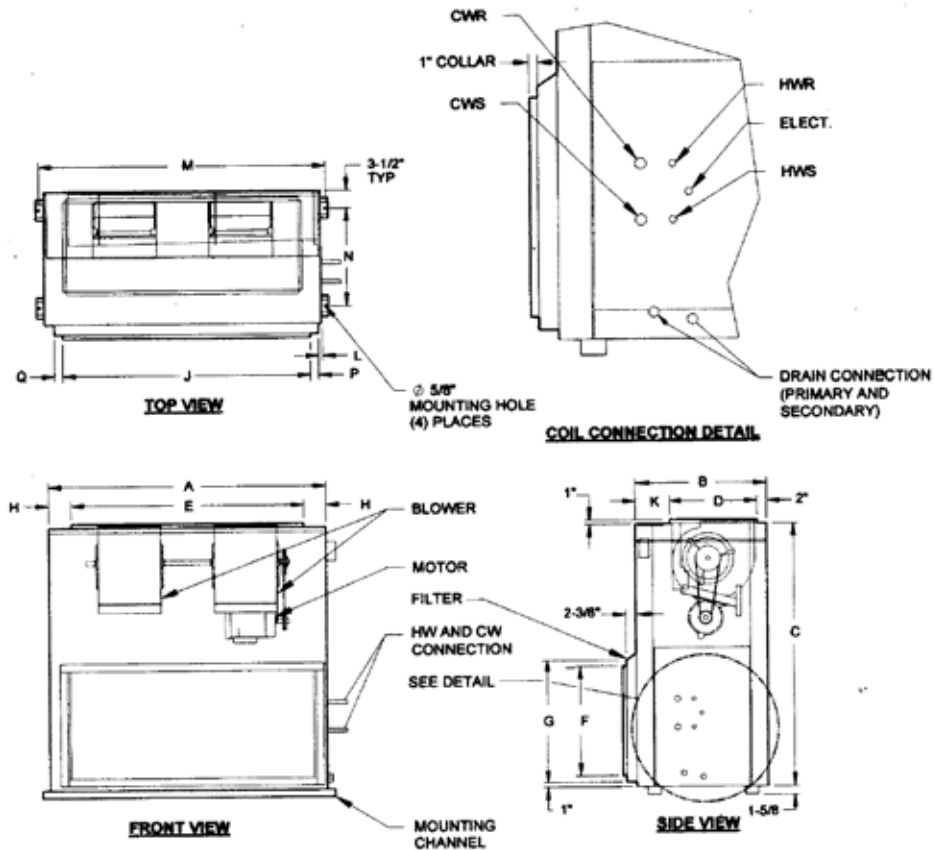
### MODEL VWG / VWP

- Right-hand unit shown, left-hand unit opposite.
- Coil connections determined by facing the supply-air opening.
- Electrical junction box is located on the same side as the coil connections.
- Drain pan is powder-coated epoxy with a 1/4" thick closed-cell insulation and has 3/4" to 1" NPT primary and secondary drain connections.



# VERTICAL DRAWINGS 10 THRU 30 TONS

Vertical 4000 Thru 12,000 CFM (10 thru 30 tons)



BASIC VERTICAL - 4000 THRU 12,000 CFM																
MODEL	A	B	C	D	E	F	G	H	J	K	L	M	N	P	Q	FILTER SIZE
10	57 1/4	27 1/4	54	18	48	22 9/16	25 1/8	4 5/8	48 1/8	7 1/4	1 3/8	59	19 5/8	1 3/8	1 3/16	(2) 25x25x2
12.5	71 1/4	27 1/4	54	20	54	22 9/16	25 1/8	8 5/8	62 1/8	5 1/4	2 1/2	73	19 5/8	1 1/2	1 3/16	(4) 16x25x2
15	85 1/4	27 1/4	60	20	60	22 9/16	25 1/8	12 11/16	72 5/8	5 1/4	1 3/8	87	19 5/8	1 1/2	1 3/16	(3) 25x25x2
20	85 1/4	27 1/4	67	24	72	30 1/8	32 1/8	6 5/8	76 1/2	1 1/4	0	87	19 5/8	1 1/2	1 7/8	(8) 16x20x2
25	105 1/4	27 1/4	67	24	90	30 1/8	32 1/8	7 5/8	102 7/8	1 1/4	0	107 1/4	19 5/8	1 1/2	1 7/8	(8) 16x20x2 (2) 16x25x2
30	116 1/4	34 1/4	83	28	90	30	40	13 1/8	104 3/8	4 1/4	0	118 1/4	26 5/8	1 1/2	1 7/8	(8) 20x25x2 (2) 16x25x2

## MODEL

- Right-hand unit shown, left-hand unit opposite.
- Coil connections determined by facing the supply-air opening.
- Electrical junction box is located on the same side as the coil connections.
- Drain pan is powder-coated epoxy with a 1/4" thick closed-cell insulation and has 3/4" to 1" NPT primary and secondary drain connections.